

IMAPCopy has been around for a while. It's last update was in 2006, but this utility is still holding strong and can be used to accomplish a mass user migration in real time from a designated source server, to the desired destination server.

IMAPCopy open source and can be modified if the end user has programming experience. The source is available on the developers [website](#).

Please note that this guide assumes the user has created the accounts already on the destination server.

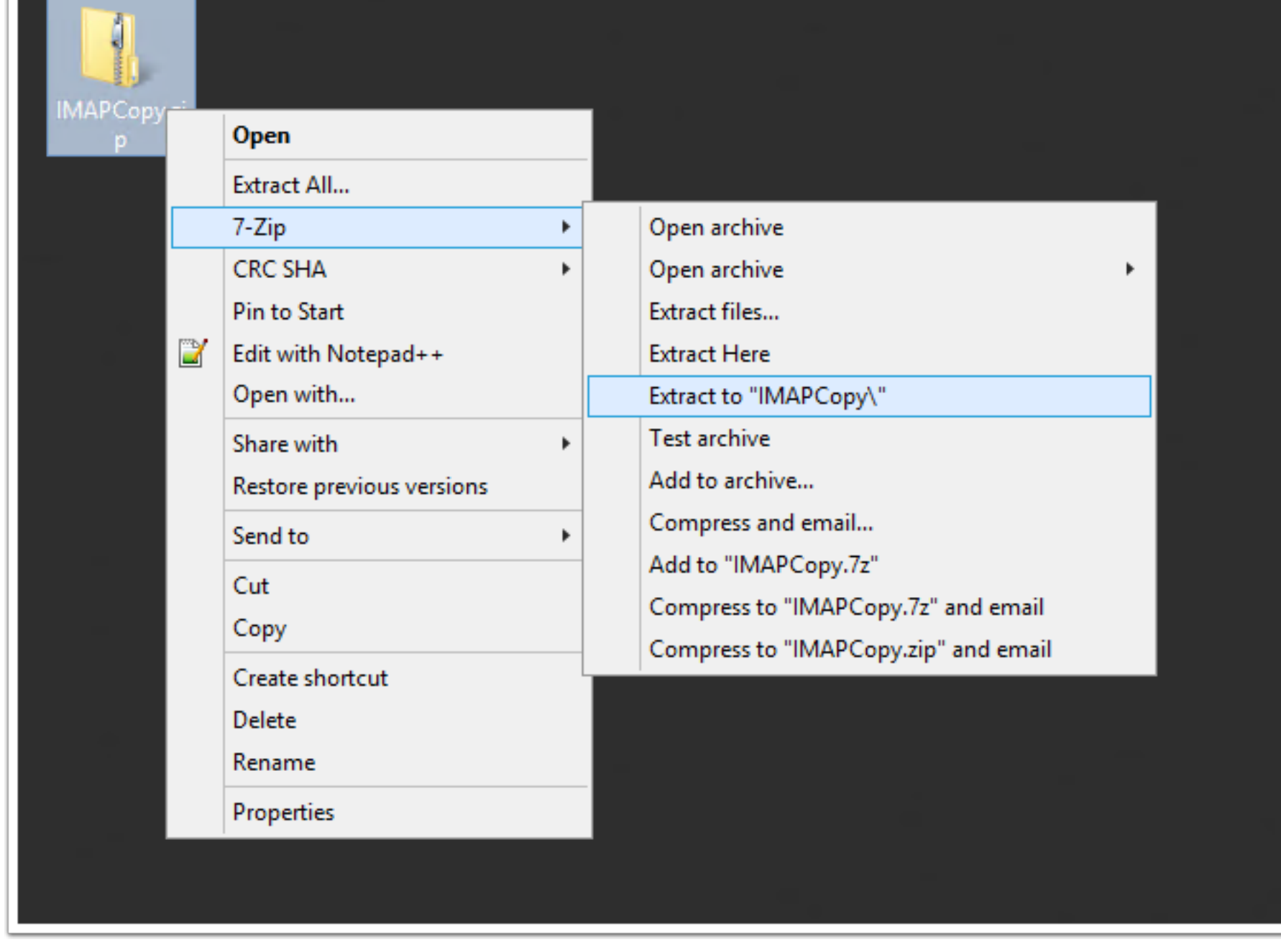
**NOTE: This is a third party application and is not affiliated with SmarterTools in any way. We do not offer support for this product and it would be considered use at your own risk.**

## 1. Download and extract the IMAPCopy application.

IMAPCopy is available from the developers [website](#).

Direct Link to the application: <http://home.arcor.de/armin.diehl/imapcopy/IMAPCopy.zip>

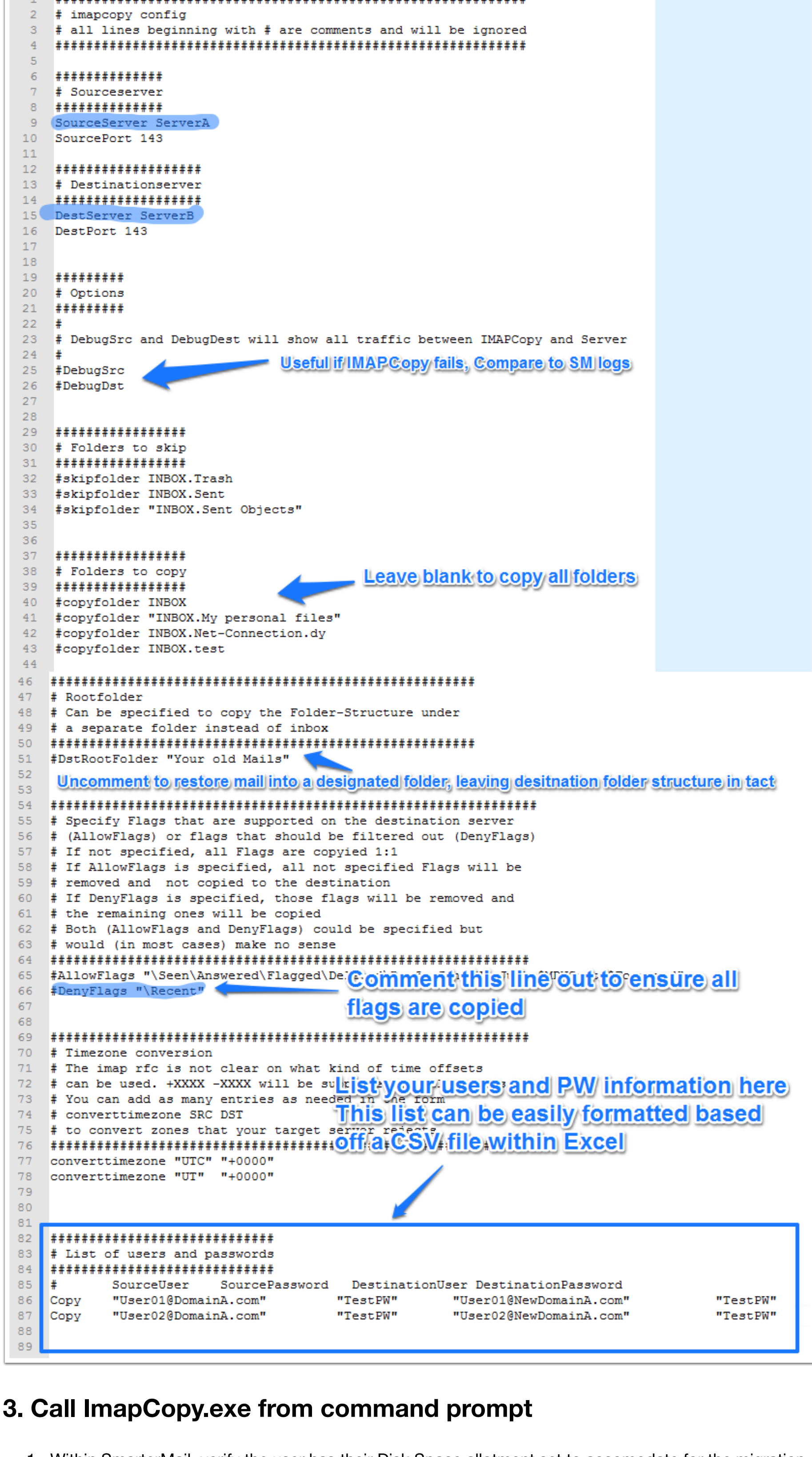
1. Download IMAPCopy from the direct link above.
2. Extract the items in the ZIP into a folder of your choosing. This guide uses the Desktop for example.



## 2. Editing the IMAPCopy.CFG file

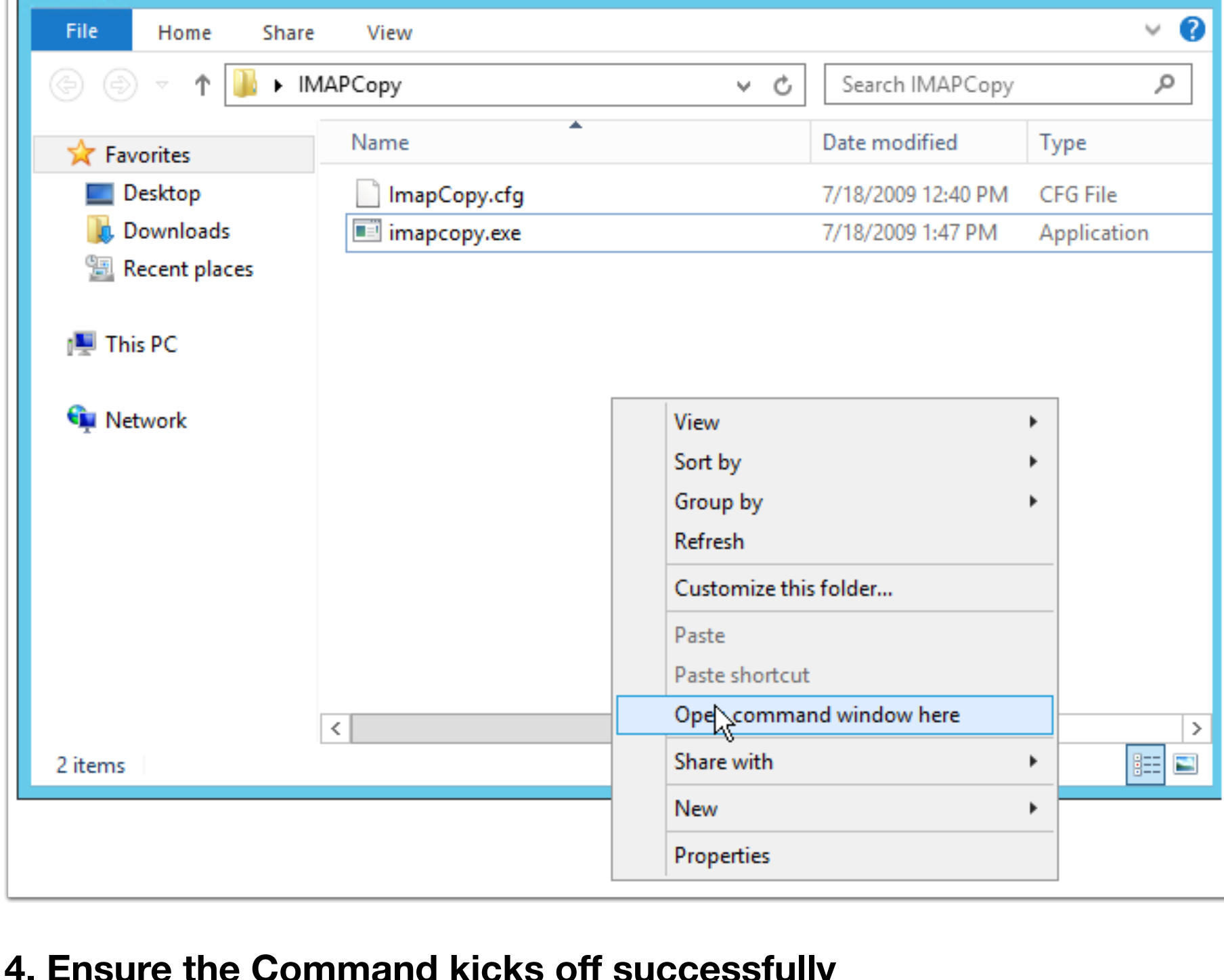
Once the two files are extracted, you'll be left with the command line executable IMAPCopy.exe and the configuration file, IMAPCopy.cfg.

1. Edit the IMAPCopy.cfg file
2. Fill in the parameters that fit your usage needs, and leave the items that do not apply commented out within the file. The usage can be reviewed on the developers site [here](#).
3. In the highlighted sections below, this outlines how to perform a basic migration from ServerA to ServerB and will keep all message flags (Seen \Deleted \Junk etc)
4. Once Finished, save the file. You are now ready to perform the copying of the data.



## 3. Call ImapCopy.exe from command prompt

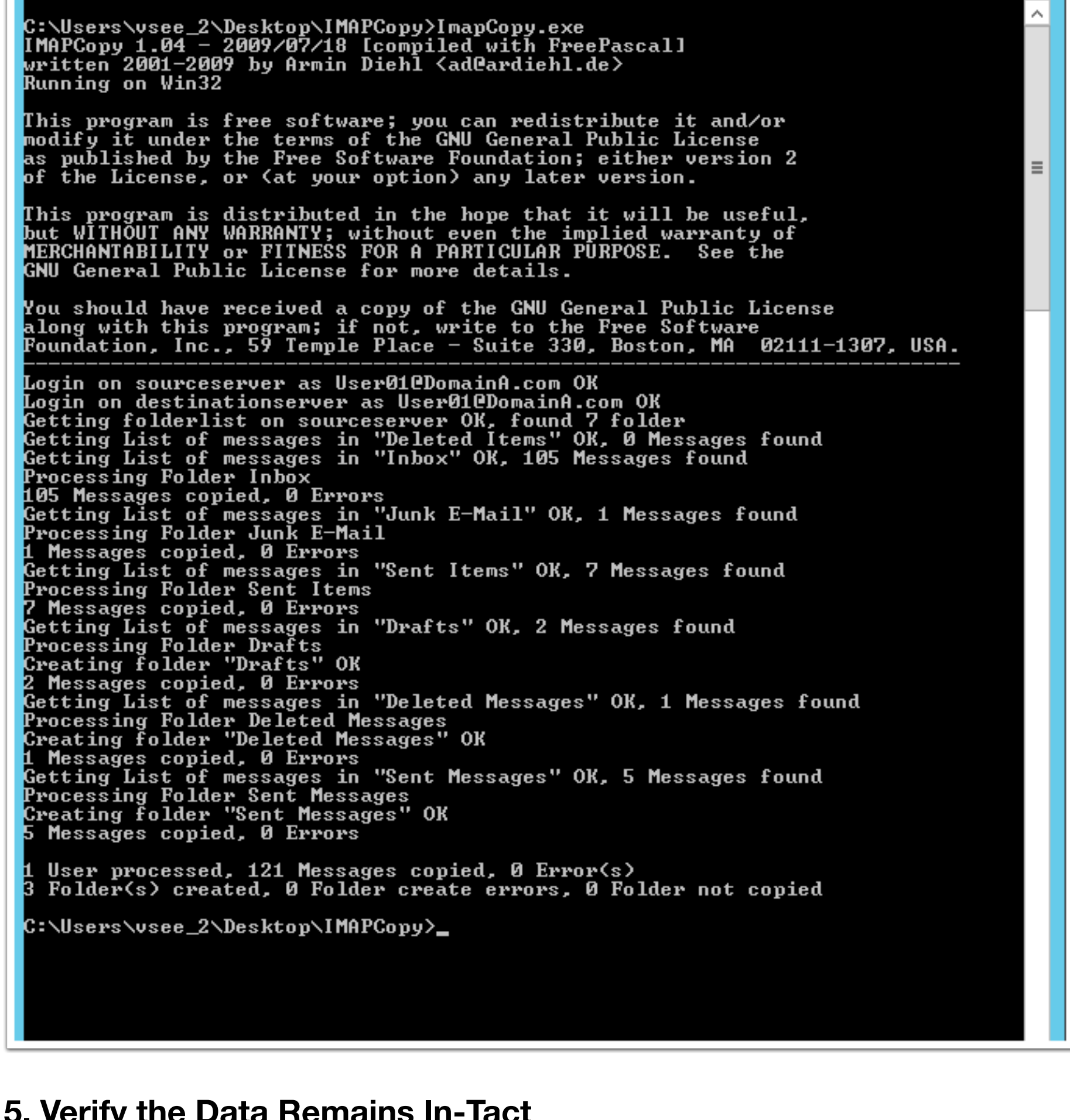
1. Within SmarterMail, verify the user has their Disk Space allotment set to accommodate for the migration.
2. Navigate to the IMAPCopy folder.
3. Call IMAPCopy.exe by holding down shift and selecting 'Open command window here'
4. Enter 'IMAPCopy.exe'



## 4. Ensure the Command kicks off successfully

Ensure the command output does not have any errors, and ensure all messages and folders were copied successfully.

If unsuccessful there should be more info in the output that can point you in the right direction. If not, try the migration again only this time enable the debugging options in the CFG file.



## 5. Verify the Data Remains In-Tact

- Ensure both the folder structure, and read status have synced successfully.

